

1. GENERAL INFORMATION

1.1 Scope of this leaflet

Congratulations on your purchase of a Sturmey-Archer hub. For the best performance, please follow the instructions in this leaflet. Please contact your dealer if any problems are experienced with this product.

This leaflet refers to the following A20 automatic 2-speed gear hubs.

- A2, A2(Compact)
- A2K
- A2D, A2LD
- A2C

1.2 Lubrication

No routine lubrication is required. During a major service, the hub greases should be replenished or replaced especially for transmission parts. Please contact your Sturmey-Archer dealer who is equipped to carry this out.

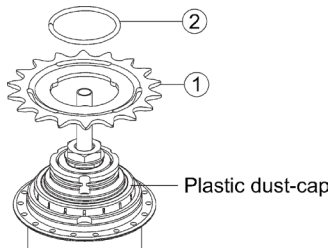
1.3 Shifting

The A20 series has an automatic shifting mechanism. The hub stays in the lower gear when the bike is stationary and when the bike accelerates to a certain speed it will automatically shift to the higher gear. When the bike slows down to a certain speed (Such as relieving pedal pressure load or coasting), then it will automatically shift back to the lower gear.

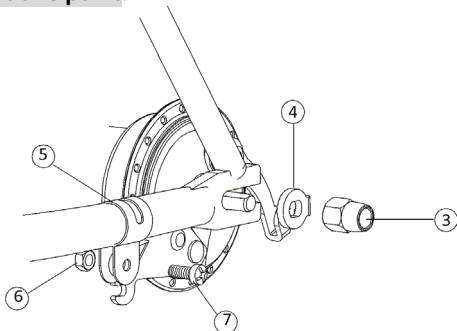
2. INSTALLATION

2.1 A2D, A2LD

1. Build the hub into a complete wheel.
2. Fit the sprocket (1) and circlip (2) onto the driver.



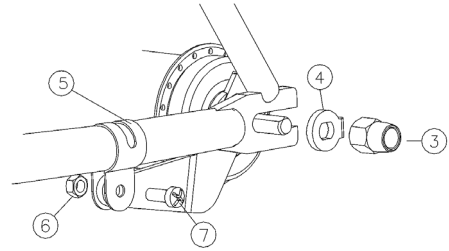
3. Put the hub axle into the rear fork end and place the chain around the sprocket.
4. Fit the lockwasher (3) and dome nut (4) on the left side of the axle.
Screw the nut finger tight.
5. Fit brake arm into brake arm clip (5) with nut (6) and bolt (7). **Do not tighten at this point.**



6. Locate the lockwasher (3) and dome nut (4) on the right side of the axle. **Do not tighten nuts at this point.**

2.3 A2C

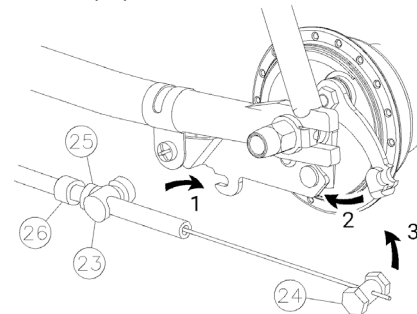
See section 2.1. Step 5 is shown as diagram.



3. BRAKE ADJUSTMENT

3.1 A2D, A2LD

1. Fit the brake cable adjuster guide (23) into torque arm. Depress the brake lever and then put the brake cable nipple (24) into the brake lever.
2. Slacken the brake adjuster locknut (25).
3. Turn the adjuster (26) counterclockwise until the brake is applied.
4. Rotate the adjuster (26) clockwise (about four revolutions) until the wheel just spins freely.
5. Tighten the locknut (25).

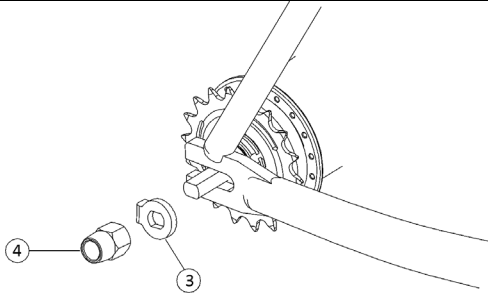


The brake adjustment should be checked or replaced if necessary before first using the bicycle and after removing or replacing the wheel.

Notice: During the first few miles brake linings "bed-in" and may require re-adjustment. Should braking efficiency become impaired beyond adjustment, the brake may need replacement. Contact your Sturmey-Archer dealer who is equipped to replace these.

3.2 A2, A2(Compact), A2K

Check and adjust according to brake manufacturers manual.



7. Align the wheel and tension the chain. Ensure that the brake arm is parallel with the chain-stay (for A2D only).
8. Tighten both dome nuts to **28Nm** and the brake arm clip nut and bolt to **7Nm**.

2.2 A2, A2(Compact), A2K

See section 2.1. Step 5 does not apply.