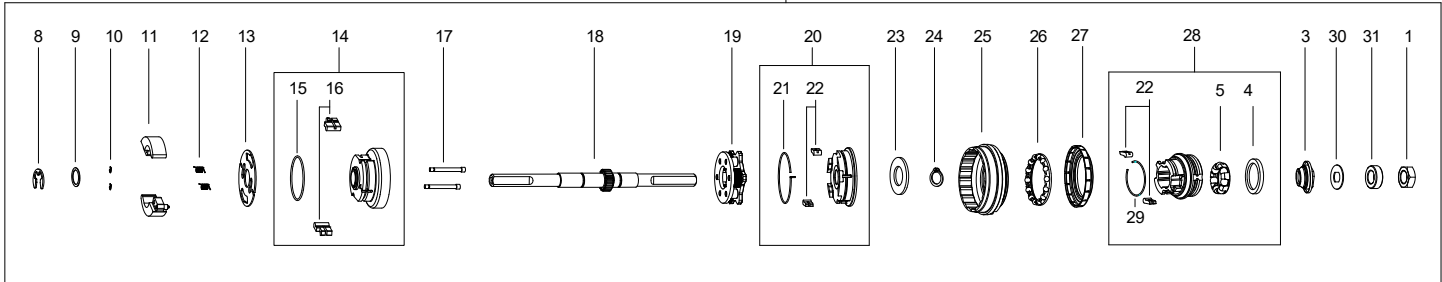
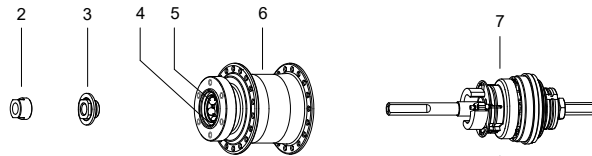


Part List: A2K Automatic Shift 2-speed Hub



Item Sales

No.	No.	Description
1	HMN407	Locknut 6.4mm
2	HMN463	Alloy Locknut
3	HSA379	Cone
4	HSA102	Outer Dustcap
5	HSA284	Ball Cage Assembly-6.4mm Ball x7
6	HSA1012	A2K(H) Hub Shell Assembly – 36H
	HSA1013	A2K(L) Hub Shell Assembly – 36H
7	HSX206	A2K(H) Internal – 185 Axle
	HSX207	A2K(L) Internal – 185 Axle
8	HSL214	E-clip No.10
9	HMW543	Washer 0.5mm
10	HSL215	E-clip No.2

Item Sales

No.	No.	Description
11	HSA976	Centrifugal Shift Weight (H)
	HSA977	Centrifugal Shift Weight (L)
12	HSA974	Shift Weight Spring (H)
	HSA975	Shift Weight Spring (L)
13	HSA973	Shift Actuator Plate
14	HSA972	Gear Ring Assembly
15	HSA982	Gear Ring Paw Spring
16	HSA981	Gear Ring Pawl
17	HSA971	Shift Weight Pivot
18	HSA980	Axle – 185mm
19	HSA970	Planet Cage Assembly
20	HSA969	Driver Adaptor Assembly

Item Sales

No.	No.	Description
21	HSA983	Pawl Spring
22	HSA410	Pawl
23	HMW571	Stepped Washer
24	HSL213	C-clip No.11
25	HSA584	Ball Ring
26	HSA438	Ball Cage Assembly
27	HSL871	Plastic Sprocket Dustcap
28	HSA978	Driver Assembly
29	HSA509	Pawl Spring for Driver
30	HMW590	Washer
31	HMW484	Spacing Washer 1/4"